

LAIANGTHOU THU KIDAWNGTUA

BEGINNER - III



Sunday School Department
Lutheran Youth Fellowship
General Headquarter



First Edition	:	1984	500 copies
Second Edition	:	1995	500 copies
Third Edition	:	2011	500 copies
Fourth Edition	:	2019	500 copies
Fifth Edition	:	2025	1000 Copies

Published by:-

Christian Education, MELC
Headquarters Zomi Colony, Churachandpur.

Printed at:

Thomson's Color Press
Chapellane, Hiangtam Lamka
Churachandpur, Manipur

LAISIANGTHOU THU KIDAWNGTUA

BEGINNER - III

Min : _____
Pamin : _____
Sangsye Min : _____

By:-

Rev. Thanglienksam

B.Th., M.Min

Revised & Enlarged by:-

Rev. S.K. Manlun

*Director of Ministries MELC - cum-
Superintendent, Sunday School Union MELC*

Revised & Picture Arranged :-

Department of Moral & Religion

LYF General Headquarter

by

Pastor M. Kamneithang Zou, MTS

Former Moral & Religion Secretary, LYF General Headquarter

&

Evan. Ginminlun

*Youth Promotor, MELC - cum -
Moral & Religion Secretary, LYF General Headquarter*

HILCHETNA

Tami laibu sunga dotna leh hilchetna tan um ahia, abailam pen a Beginner te hilna dia kibawl ahi. Simmun khat ah thupi khat jel um ahia, hinanleh tua Thupi pen kitahlang lou in sangsye ten asim Chiang ua athei khat ding uh deina ziah ahi.

Kihilna a kiman ding dan:

Naupangte'n mulou a agenthei nading ua hil ding. Amauh le ama uh kidawngtuasah ding ahi.

Laibu in atup:

Naupangte'n Bible tangthu aban ban a kijom tah a athei ding uh. Tualeh Pasion silsiamte leh mihingte Jesu Hagau Siangthou leh hundamna lam thu a athei thei nading uh ahi pen hi.

THUMAPUI

Tam Beginner te zil ding a kibawl laibu neupen Part I-III tan ahia, Part I (khat) napen kumkhat sung azil ding uh ahi.

Tualeh Beginner Part I zilte kumtawp ekzamna (Exam) ah apang sih ding ua, Part II na leh III nate kumtawp ekzam (Exam) in apang ding uhi. Tualeh part I nate pen ama uh local sung a ama uh sangsye ten kumtawp ekzam na (Exam) abawlsah ding uhi.

Tualeh part II na leh III na zillaite pen LYF pumpi kumtawp ekzam (Exam) na ah apang ding uhi. Tualeh Beginner te pen abu dungzui in part I na khu kum khat abawl ding ua, akum nina Chiang in part II na abawl ding ua, tualeh akum thumna ah part III na abawl ding uhi.

Tuaziah in Naupang Sunday School syeten ittina siangtah nei in naupangte kem in hil va ui

Naseppi uh

Rev. Thangliankham
B.Th., M.Min

PULAHNA

Kum 1984 a Rev. Thanglienkhram in ana bawl Beginner Subject (Part I-III) tan khu abeita a, tuaziah in tuami subject ma hoi nalai dinga gintat ahi ziah in hing kisun tha hi. Tam Beginner subject pen thu kidawngtua ahi ziah in naupangte ding in ahoi a, a informative mama hi.

Tuaziah in tukum a sut tha thei ding a hing na buaipi amasa sang a hoizaw leh bukim zaw a hing bawlsah Rev. Thanglianckham B.th., M.Min tung ah LYF thataang in Mangpa min in lungdamthu kagen hi.

Tami Beginner subject tungtawn in Pasian in naupangte gualzawl ta hen.

Naseppi uh

Rev. V. Hangminthang

Director of Ministries i/c Youth - cum -
Superintendent, Sunday School Union, MELC



Lutheran Youth Fellowship
Manipur Evangelical Lutheran Church
Regd.No.8 of 1998

Head Office Zomi Colony, Post Box-10
Churachandpur – 795128, Manipur
Email: lyfhqmelc@rediffmail.com
Mb.No.9615143721/8974126212

NUAMTHUGENNA

The 17th February, 2011

Kum sawtpi Naupang Sunday School sunzomtou thei zelding a hing mapui, Pasiang min phat in um masa hen.

Beginner te tawi ding laibu masang a ina bawlte uh abeitah toh kizui in, maban a poimaw ding ihi natoh LYF council khawmpi 2010 in reprint/revised bawldia pha isah dungjui in Rev. S.K Manlun, Director of Ministries guat a um, alawchin thei nading a pan ahing lahpi natung ah LYF Hq. in kipahtu itun hi.

Beginner laibu na bawl masa Rev. Thangliankham, DS Lamka tung a jong LYF Hq. in nuamthu igen hi. Tami laibu tungtawn in Naupang nouten kumtawn hinna atan na uleh tahsa/hagau a akhan letna uh hing hi jing taken.

Naseppi uh

P. Khamminlun
General Secretary
Lutheran Youth Fellowship
General Headquarter

Rev. Thangchinkhup
Chairman
Lutheran Youth Fellowship
General Headquarter



Lutheran Youth Fellowship

GENERAL HEADQUARTER

(Manipur Evangelical Lutheran Church)

Head Office: Zomi Colony, Churachandpur - 795 128, Post Box - 10, Manipur, India
Regd. No. 101 of 1987 Govt. of Manipur. Regd. No. 194160073 with Ministry of Home Affairs, Govt. of India.

Ref. No.:

Date:

LUNGDAMPINA

The 21st November, 2019

Beginner te tawi ding Laibu kum peisate a ina bawlte uh a beitah toh kiton in maban a poimaw ding ihi na toh LYF, GHQ. 2nd Standaing Resl.No. 4 na dungjui in reprint bawl dia phasah ahi dungjui in Mr. Khailianthang, Moral & Religion, LYF, GHQ. Khu Naupang Sunday School Union mawpuohna pieh ahi dungjui in sutkhiet thei a ang um ta ziehin LYF/GHQ in kipathu igen hi.

Tami laibu tungton in Naupang ten Kumtawn hinna a tan theina ding uleh tah-sa-hagau a ahing khanglet theina ding uh lampi hiltu hing hi zing taken.

Manggam a na seppi uh,

Upa T.Pumminlal
General Secretary
Lutheran Youth Fellowship

P. Khamminlun
Chairman
Lutheran Youth Fellowship



MANIPUR EVANGELICAL LUTHERAN CHURCH

Constituent Member Church of Evangelical Lutheran Churches In The Himalayan State

Head Office Zomi Colony, Post Box- 10, Churachandpur - 795128, Manipur India,

Regd.No.101 of 1987 Govt.of Manipur. Registered u/s FCRA vide Regn. No. 194160073[Pan No. AACAM4570A]

Office Ph: 03874235073 Cell : +91 9366204820/e-mail: melchqtrs@gmail.com Website: www.manipurlutheran.com

Ref. No.

Date :

PULAAH NA LEH LUNG DAM THUPHUON

The 16th January 2025

Lutheran Youth Fellowship General Headquarter, Sunday School Department te sai na nei a Naupang Nipi Sang (Beginner) laibu LAISIENGTHOU THUKIDAWNG TUO, siensuo theiding, tawithei ding leh simthei ta ding a hing lemsaah pihh Pasian tung ah lungdam ma ma ing.

Tualeh, hun peisa 1998 kum laai apat tam laibu hing na patpii leh hing na buoipihh, **Rev. Thangliankham**, B.Th. M.Min. abaan ah Revised & Enlarged hing na bawlpiih, **Rev. SK.Manlun** Director of Ministries and Superintendent Sunday School Union, te leh tulaai naupang te lunglut na ding leh thei baih theih na dia Revised & Picture Arranged hing na bawlpiih, **Pastor M. Kamneithang Zou**, MTS, Biel Pastor Lamka East Division leh, **Evan. Ginminlun**, Youth Promoter & Secretary, Moral and Religion Department LYF.General Headquarter, amaute kukal na leh pawnthaw na toh tam a etlawm ma ma laibu hing om theih ahii a, Upa **S. Zamkhanpau** Chairman LYF Gen. Hqtrs leh **Pa Francis Neilian Samte** Secretary LYF Gen. Hqtrs sai na a Children Education MELC te'n, ang Publish uh ahii man in amaute tung ah jongh Pasian min in lungdam thu ka phuong hi.

Tam (Beginner) laibu asim ding, I tate'n Laisiengthou thu theisiem na leh, Pasian guoljawna thupha ang muu na uh hing hi taa hen chi'n thuphaa pie in pulaah na leh lungdam thu ka phuon ahi

Rev. SUONBOI TUNG DIM

Director of Ministries

I/C Youth, MELC



Lutheran Youth Fellowship

GENERAL HEADQUARTER

(Manipur Evangelical Lutheran Church)

Head Office: Zomi Colony, Churachandpur - 795 128, Post Box - 10, Manipur, India
Regd. No. 101 of 1987 Govt. of Manipur. Regd. No. 194160073 with Ministry of Home Affairs, Govt. of India.

Ref. No.:

Date:

LUNGDAMPINA

The 18th January, 2025

Naupangte Pasian a kibul phu masat ding gelkho nazal a Beginner subject "LAISIENGTHOU THUKIDAWNGTUO" Part I-III tan hing na bawlpia Rev. Thangliankham tungah lungdam thu athatha in itut kia uhi. Tam subject kum tampi na kizang tou den ahia, tunitan in mi tampi'n hagau ah aphant tuampi hi chi muthei in aum hi. Tualeh tunitan tam laibu "LAISIENGTHOU THUKIDAWNTUO" toh kisai a Naupangte tawi thei dinga apoimaw leh akul dungzui a pan nala tou zousia tungah zong lungdam thu itut kia uhi.

Lutheran Youth Fellowship, General Headquarters 2nd Standing, date 06-11-2022, Thupuahsah No 3 in Beginner Subject LAISIENGTHOU THUKIDAWNGTUO a milim (Pictures) toh kithuo a bawlding chia alemsah ahi. Tam toh kisai a mawpuohna lading a guot aum Pastor M. Thangboi Zou leh Evan. Ginminlun Secretary (Moral and Religion) LYF GHQ te'n a mawpuohna hing semsuo in, tam laibu muthei leh tawitheidi dinga ahing bawlkhiat na tung ua lungdamthu igen uhi.

Tam laibu pen ikhang ikhang ading a Pasian thutoh kisai a i gou khat ahi ziehin kepdan siam poimaw ding hi. Thamlou in Naupangte Pasian thu azil patna uh ahia, a lunglut thei nading uleh Pasian thutah ki chitu nading tup leh ngimna a Beginner subject "LAISIENGTHOU THUKIDAWNGTUO" a milim leh Coloring dinga hing kibawl ahi.

Tam beginner subject "LAISIENGTHOU THUKIDAWNGTUO" Naupangte a dingin Pasian thu theisiamna, hagau lam khanletna leh muna hing hita hen.

Manggam a na seppi uh,

Upa S Zamkhanpau
Chairman
Lutheran Youth Fellowship

Francis Neilian Samte
General Secretary
Lutheran Youth Fellowship

SIMMUN - 1

Dohna 1: Jesu pianna bang khua e?

Dawwna: Bethlehem ahi.

Dohna 2: Jesu bang chi na e?

Dawwna: Hundampa chi na ahi.

Dohna 3: Jesu mihingte piandan ngaina bang a piang ama?

Dawwna: Mihing ngaina bang a piang ahi.

Dohna 4: Jesu pianna ava en masapente koite e?

Dawwna: Belampute ahi uhi.

Dohna 5: Jesu pian a lapawl sate koite e?

Dawwna: Serafimte ahi uhi.

Dohna 6: Jesu asenlai a thasawmpa koi e?

Dawwna: Kumpi Herod ahi.



Pic: Bethlehem ah Jesu piang

COLOUR BAWL IN



SIMMUN -2

Dohna 1: Jesu pian a chibai buh a hing peite koite e?

Dawnna: Sualam mipilte ahi uhi.

Dohna 2: Jesu aneulai in heisung mun ah ataipi uoi?

Dawnna: Egypt gam ah ataipi uhi.

Dohna 3: Sualam mipilte'n Jesu piang kipahpina in bang apia uoi?

Dawnna: Begaw, Murrah leh Ngun/Sana apia uhi.

Dohna 4: Jesu anaupan lai in heisung mun ah aum ei?

Dawnna: Nazareth khua ah aum hi.

Dohna 5: Jesun kum bangzat ahi in baptisma atang ei?

Dawnna: Kum sawm thum (30) ahi in atang hi.

Dohna 6: Jesu koi in baptisma atang sah e?

Dawnna: Baptispa Johan atang sah hi.



Pic: Jesu'n baptisma tang

COLOUR BAWL IN



SIMMUN - 3

Dohna 1: Jesun baptisma atanglatah a sillamdang tung khu bang e?

Dawnna: Van kihong in Pasion hagau vakhu bang a hing kumsuh in atung ah atu a,tualeh ngaivawi, thakhat in van a kipat in aw khat in, “Tami ka tapa deitah, ka kipahna mama ahi,” achi hi.

Dohna 2: Jesu’n baptisma atan zou in heisung mun ah apei ei?

Dawnna: Hagau siangthou in gamdai ah apui hi.

Dohna 3: Jesu gamdai ah ni bangza aum ei?

Dawnna: Ni sawmli (40) aum hi.

Dohna 4: Setan in Jesu bangzat vei asol ei?

Dawnna: Thumvei asol hi.

Dohna 5: Setan in Jesu thumvei asoldan te bang e?

Dawnna: a. Pasion tapa nahileh tam suangte tanghou suah sah ding in thupia in
 b. Biah inn vum apat lengsuh in tua hileh vansawltahnten akhut un ahing na domtou ding uhi
 c. Khupboh a nahing biah leh tam leitung lenggam zousia leh athupina zousia ka hing peding hi.

Dohna 6: Jesu sillamdang bawl masah pen bang e?

Dawnna: Kana khua kitenna a tuisiang lenggazu asuah sah khu ahi.



Pic: Jesu’n tuisiang lenggazu sua sah

COLOUR BAWL IN



SIMMUN -4

Dohna 1: Jesu'n anasepna munpi ding in heiteng azang ei?

Dawnna: Capernaum khua azang hi.

Dohna 2: Jesu'n ama nuazui ding a ahat masah pen koi e?

Dawnna: Simon Peter ahi.

Dohna 3: Jesu'n natna suhdam theilou anei ei?

Dawnna: Jesu'n natna zousia asudam thei hi.

Dohna 4: Jesu'n mipite bang chi'n thu ahil ei?

Dawnna: Gentena (parables) azang zel hi.

Dohna 5: Jesu'n naupang te a ngaina ei ma?

Dawnna: Jesu'n naupangte a ngaina mama hi.

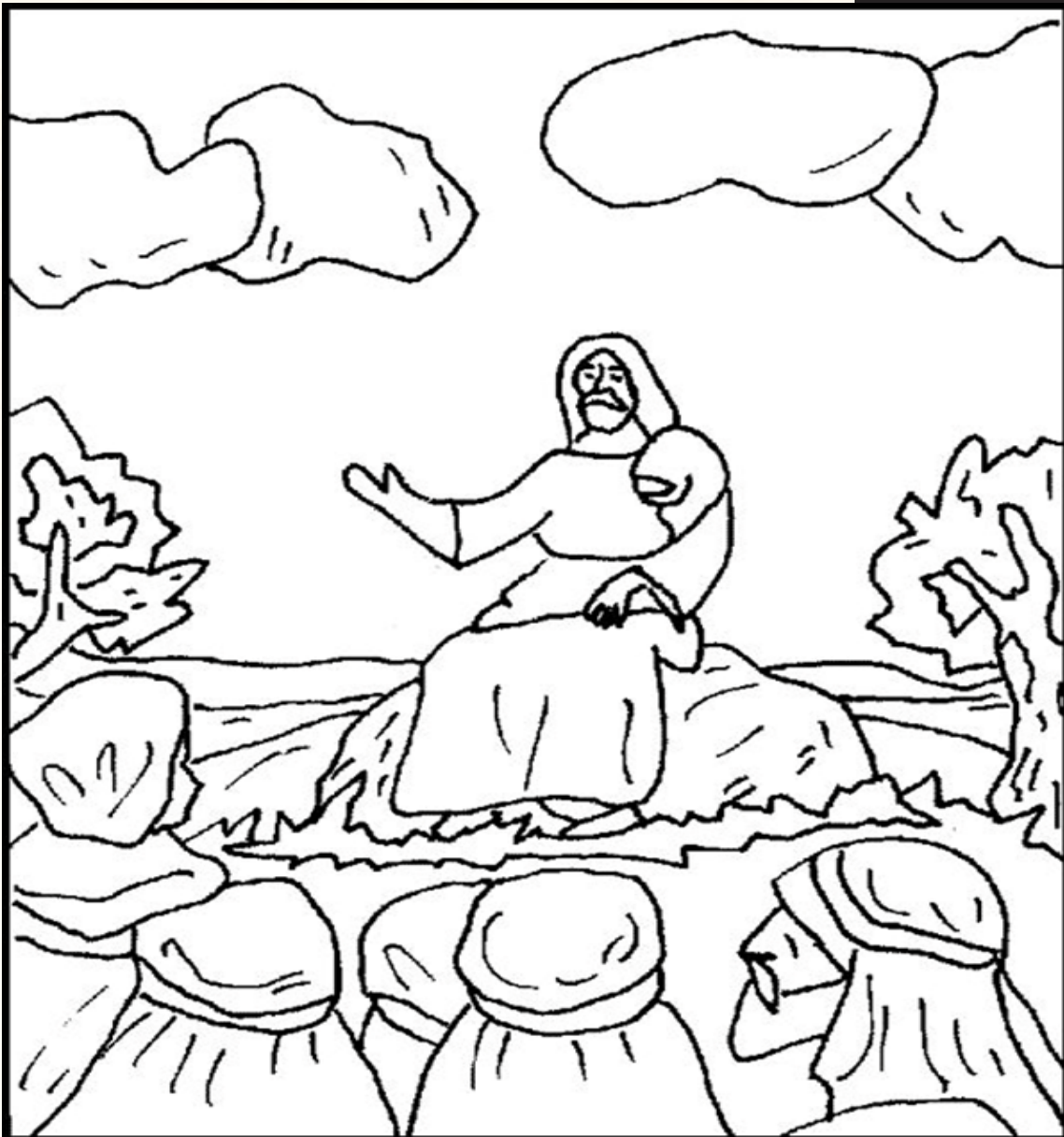
Dohna 6: Jesu'n leitung ah kum bangzat na asem ei?

Dawnna: Kum thum sung asem hi.



Pic: Jesu'n mipite Pasion thu hil

COLOUR BAWL IN |



SIMMUN - 5

Dohna 1: Jesu zua a mansah pa koi e?

Dawwna: Judas Iscariot ahi.

Dohna 2: Jesu thading a Judate pekhepa koi e?

Dawwna: Kumpipa Pilat ahi.

Dohna 3: Jesu singlamte tung a akilbeh ding ua thum te (praying) koite e?

Dawwna: Juda mipite leh alamkaite uh ahi.

Dohna 4: Jesu koi shi taang a shi e?

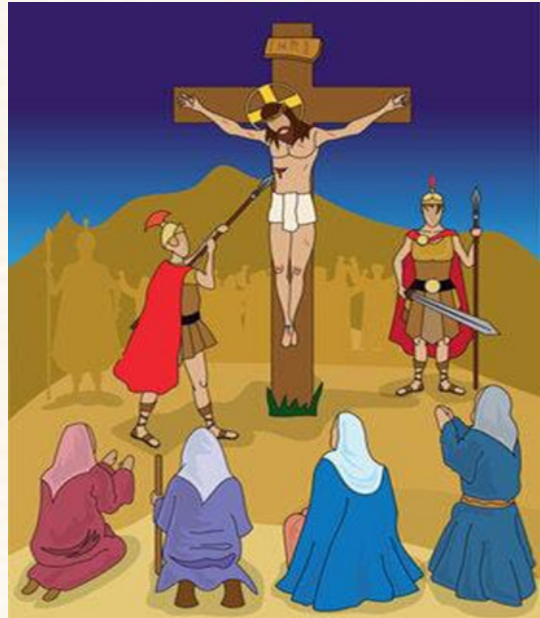
Dawwna: Mizousia nang leh kei taang a shi ahi.

Dohna 5: Jesu vuipa koi e?

Dawwna: Arimathea khua a Joseph ahi.

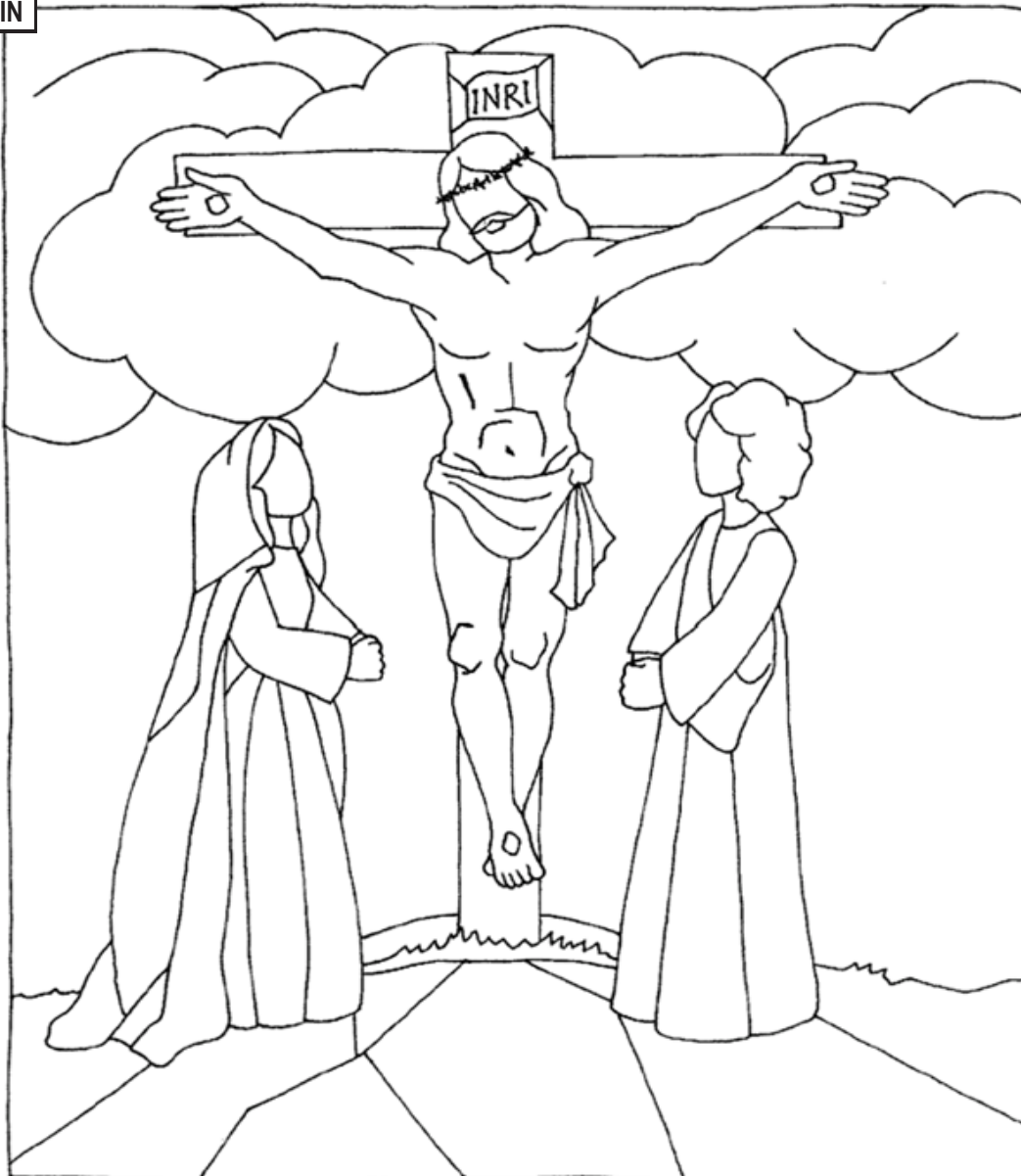
Dohna 6: Singlamte tung a Jesu thugen nukhia pen bang e?

Dawwna: Zaw ahi ta.



Pic: Nang leh kei shitang in Jesu hing shi

COLOUR BAWL IN



SIMMUN - 6

Dohna 1: Jesu shina bangtan vei nit thei ding e?

Dawnna: Agingta te ading a kumtawn a nit thei ahi.

Dohna 2: Jesu hankhuuh ah bangtan vei alum ei?

Dawnna: Suun thum le zaan thum alum hi.

Dohna 3: Jesu shina apat athaw in koi kung ah akilang masapen ei?

Dawnna: Mari Magdalene kung ah akilang masapen hi.

Dohna 4: Jesu bang ding a shina apat a thoukia e?

Dawnna: Khelna leh shina in a hentang zoulou Pasian ahi ziah ahi.

Dohna 5: Jesu shina apat athawkia in leitung ah ni-bangzat aum ei?

Dawnna: Ni sawmli sung aum hi.

Dohna 6: Jesu shina apat athawkia zou sung leitung ah bangzat vei akilang ei?

Dawnna: Sawm vei akilang hi.



Pic: Mari Magdalene kung a Jesu kilang

COLOUR BAWL IN |



SIMMUN - 7

Dohna 1: Jesu'n akisut na ma akhoisah koi e?

Dawnna: Thomas ahi.

Dohna 2: Jesu van a akaltou in bang taang (mount) pen apat akaltou ei?

Dawnna: Olive taang apat akaltou hi.

Dohna 3: Tu in Jesu heisung mun ah aum ei?

Dawnna: Van ah Pasion ziatlam ah atou hi.

Dohna 4: Jesu vantung mai mai a um ama?

Dawnna: Hagau in mun zousia ah aum hi.

Dohna 5: Bang ding a Jesu van a kaltou se ahiai?

Dawnna: Ama gingtate um nading mun bawl a kaltou ahi.

Dohna 6: Jesu ahing peikia diai ma?

Dawnna: Ahing peikia ding ahi.



Pic: Nuazuite mitmu in Jesu van ah kaltou

COLOUR BAWL IN



SIMMUN - 8

- Dohna 1:** Jesu bang bawl dia hing peikia ding e?
Dawnna: Ama gingtate pui a hing peikai ding ahi.
- Dohna 2:** Jesu bang hun Chiang a hing peikia ding e?
Dawnna: Van a pa Pasion lemsah hun a hing peikia ding ahi.
- Dohna 3:** Jesu bang chibang a hing peikia ding e?
Dawnna: Kawlphe bang in mallang tah in ahing peikia ding hi.
- Dohna 4:** Jesu van a akaltou nua in a nuazuite heisung ah aum uoi?
Dawnna: Jerusalem khopi a pindan tungnung ah aum uhi.
- Dohna 5:** Nuazuite Jerusalem pindan tungnung a bang ding a um uh ahiai?
Dawnna: Jesu thuchiam nga a um uh ahi.
- Dohna 6:** Nuizuite kung a Jesu thuchiam bang e?
Dawnna: Panpitu Hagau Siangthou ahi.



Pic: Nuazuite Jerusalem pindan tungnung ah

COLOUR BAWL IN



SIMMUN - 9

Dohna 1: Hagau Siangthou bang chih hun a hing tung e?

Dawnna: Penticost ni a hing tung ahi.

Dohna 2: Penticost ni bang chih ni e?

Dawnna: Jesu van a akaltou zou ni sawm nga (50) ni ahi.

Dohna 3: Penticost ni a Hagau Siangthou bang hing chitun e?

Dawnna: Huipi hat tah leh meikuang bang in atung uah atu hi.

Dohna 4: Penticost ni a Hagau Siangthou tang mi bangzat apha ei?

Dawnna: Mi za leh sawmni (120) apha hi.

Dohna 5: Penticost ni a sillamdang tung bang ahiai?

Dawnna: Hagau Siangthou tang nuazuite thugen ngaikheten ama uh hamchiat in aza uhi.

Dohna 6: Penticost ni a mipi hingpei khawmte kung a thugen koi e?

Dawnna: Sawltah Peter ahi.



Pic: Nuazuite tungah huipi leh meikuang bang in Hagau Siengthou tu

COLOUR BAWL IN



SIMMUN - 10

Dohna 1: Sawltah Peter thugen na ah mi bangza a piangtha ei?

Dawnna: Mi sang thum (3000) apiangtha hi.

Dohna 2: Sawltah Peter thugen a piangtha mi sang thum te Jerusalem khopi mi ngen ahi uh ama?

Dawnna: Jerusalem khopi mi leh gam tuamtuum apat ahi uhi.

Dohna 3: Penticost ni zou in Jerusalem khopi a gingtute bang achi um ta uoi ?

Dawnna: Sawltah te thuhilna ngaikhawm in anei alam te uh kitaang in thumna toh hun azang uhi.

Dohna 4: Nuazuiten Judas Iscariot thaheng ding in koi ateel uoi?

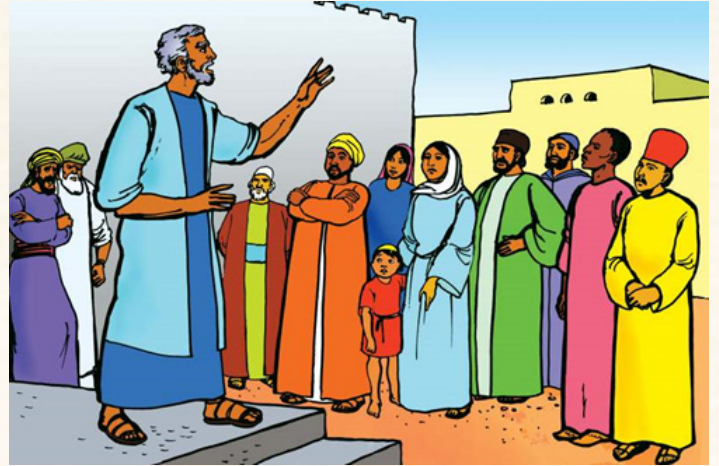
Dawnna: Mathias ateel uhi.

Dohna 5: Niteng neh le taah silhawm ding in mi bang zat ateel khia uoi?

Dawnna: Mi sagi ateel khia uhi.

Dohna 6: Anania leh Saphira te nupa in asil bawlkhial ziah un bang a tuah law uoi?

Dawnna: Anupa un thakhat in adinshi uhi.



Pic: Sawltah Peter in Pasion thu gen

COLOUR BAWL IN



SIMMUN - 11

Dohna 1: Jerusalem khopi a khristiante tunga suhgentheina (persecution) ahing um in gingtute bang achi umta uoi?

Dawnna: **Ataizaah ta ua atai nalam chiat uah Pasion thu agen uhi.**

Dohna 2: Jerusalem khopi a khristian gingtute tung a bawl gentheina ang tun in upa Philip heilang ah atai ei?

Dawnna: **Samaria khopi ah atailut a, hattuum aphut ngal hi.**

Dohna 3: Philip in Gaza lampi a baptisma atansah pa koi e?

Dawnna: **Ethiopia michilge pa ahi.**

Dohna 4: Suhgentheina (persecution) ziah in hattuum (church) akiam ei?

Dawnna: **Kiam nahsang in apung deu deu hi.**

Dohna 5: Pasion thu (Gospel) ziah a tha (martyred) a um masapen koi e?

Dawnna: **Upa Stephen ahi.**

Dohna 6: Upa Stephen Pasion thu (Gospel) ziah in bang achi shi ei?

Dawnna: **Suang a selup in aum hi.**



Pic: Upa Stephen, Jesu a gingtat zieh in suang a sehlup in om

COLOUR BAWL IN



SIMMUN -12

Dohna 1: Saul koi khua a piang e?

Dawnna: Tarsus khua a piang ahi.

Dohna 2: Saul bang chibang mi e?

Dawnna: Laisiam mi leh dan thei mi ahi.

Dohna 3: Saul bang ziah a Pasion thugen minthang hing suathei ei?

Dawnna: Jesu khrist a piangthana anei ziah ahi.

Dohna 4: Saul a piangtha zou in heiteng ah apei ei?

Dawnna: Arabia gamdai ah kum thum ava um hi.

Dohna 5: Arabia gamdai apat Saul ang pawtkhiat in bang na asem ei?

Dawnna: Pasion thu (Gospel) agenpan ta hi.

Dohna 6: Missionary nasem in Paul in bangzat vei missionary khualzin na anei ei?

Dawnna: Thumvei anei hi.



Pic: Saul in Jesu maitua in piangtha ngal hi

COLOUR BAWL IN



SIMMUN - 13

Dohna 1: Paul in a missionary khualzin na masapen ah koi azawpi ei?

Dawnna: Barnaba toh Johan azawpi a, hinanleh Johan akinuale kia hi.

Dohna 2: Paul in Bible sung ah gelkha anei ama?

Dawnna: Bu sawm le thum anei hi.

Dohna 3: Bible sung a Paul in agelkha laibu te min bang e?

Dawnna: Rome apat Philemon tan ahi.

Dohna 4: Jesu nuazuite lah a damsawt pen koi e?

Dawnna: Johan ahi.

Dohna 5: Johan in Bible ah gelkha anei ama?

Dawnna: Bu nga anei hi.

Dohna 6: Bible sung a Johan laigel ngate bang bang e?

Dawnna: Khantanhoi Johan, Johan laihah khatna, ni na, thumna toh Kihilna ahi.



Pic: Paul leh Barnaba missionary khal zin

COLOUR BAWL IN



SIMMUN - 14

Dohna 1: Bible a laibu nukhiapen min bang e?

Dawnna: Kihilna ahi.

Dohna 2: Hagau Siangthou kichi koi e?

Dawnna: Hamuanpa leh panpitu, Pasion a thumte lah a khat ahi.

Dohna 3: Pasion heisung ah aum ei?

Dawnna: Van ah aum a, hinanleh hagau in munteng azong aum hi.

Dohna 4: Pasion in bawl khahlou sildang anei ama?

Dawnna: Pasion in bawlkah lou sil bangma anei sih hi.

Dohna 5: Pasion in a ngainat mama bang e?

Dawnna: Asiamsa leitung mihing te ahi.

Dohna 6: Pasion in leitung mihingte alungsiat ziah in bang apia ei?

Dawnna: Atapa tangkhat neisun Jesu apia hi.



Pic: Pasion in leitung mihingte itt pen hi

COLOUR BAWL IN



SIMMUN - 15

Dohna 1: Mihingten bang chileh Pasion akipah sah thei diai?

Dawnna: Ginna leh thumanna in akipahsah thei hi.

Dohna 2: Pasion in sil bangkim tung ah thuneina anei ama?

Dawnna: Ing he, anei hi.

Dohna 3: Jesu kichi koi e?

Dawnna: Pasion tapa tangkhat neisun mihingte hundam ding a hing pei khu ahi.

Dohna 4: Jesu bang ding a mihing bang a hing piang e?

Dawnna: Leitung mihingte tankhe ding ahi ziah in ahi.

Dohna 5: Lampi thutah leh hinna khu koi e?

Dawnna: Jesu khrist ahi.

Dohna 6: Pasion belamnou leitung khelna lamang ding a hing pei khu koi e?

Dawnna: Jesu khrist ahi.



Pic: Jesu, Pasion belam nou leitung mihingte khelna lamang pa khu

COLOUR BAWL IN



SIMMUN - 16

Dohna 1: Thawkiana Mangpa kichi koi e?

Dawnna: Jesu khrist ahi.

Dohna 2: Belampu hoi a belamte adia ahinna pia khu koi e?

Dawnna: Jesu khrist ahi.

Dohna 3: Pasion in van leh lei thuneina zousia apia khu koi e?

Dawnna: Jesu khrist ahi.

Dohna 4: Jesu'n van a akaltou zou a ang sawl suh khu koi e?

Dawnna: Hagau Siangthou ahi.

Dohna 5: Mizousia hundampa khu koi e?

Dawnna: Jesu khrist ahi.

Dohna 6: Hagau Siangthou khu koi e?

Dawnna: Hamuanpa leh panpitu, Pasion a thumte lah a khat ahi.



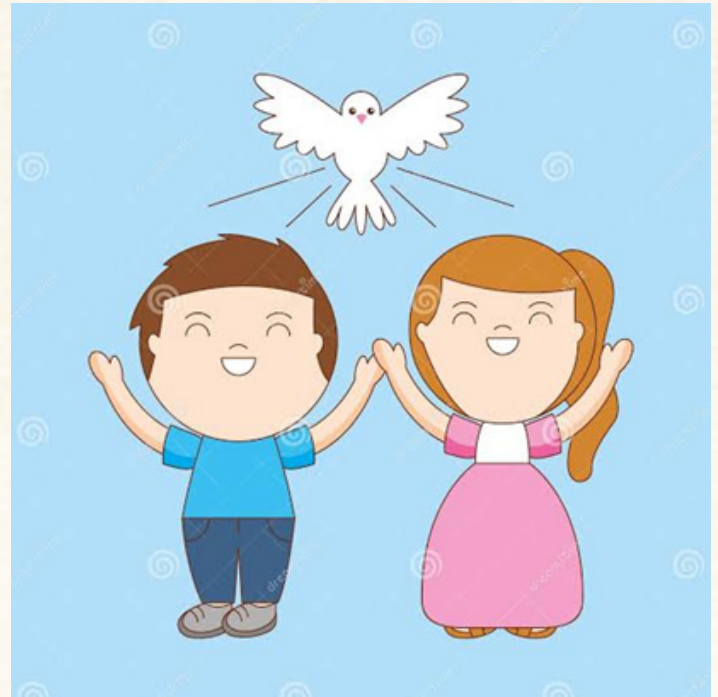
Pic: Thawkiana Mangpa Jesu Khrist

COLOUR BAWL IN



SIMMUN - 17

- Dohna 1:** Hagau Siangthou nasep thupipen bang e?
Dawnna: Jesu gingta thei ding in mi apanpi a, aging-tate asuhat zel hi.
- Dohna 2:** Hagau Siangthou min ngai khat bang e?
Dawnna: Hamuanpa leh thungetpiah pa ahi.
- Dohna 3:** Tu hepina hun khu koi hun e?
Dawnna: Gingtu hattuum (church) hun ahi.
- Dohna 4:** Jesu khrist gingtate Hagau Siangthou in bang chibang in a pui ei?
Dawnna: Pasion deileh deilou khentel thei ding in apui hi.
- Dohna 5:** Mihingten igitlou ziah un ibang pentah uh imansua uoi?
Dawnna: Hagau a hinna imansua uhi.
- Dohna 6:** Mihingte ikhelna ziah ua itung ua siltung bang e?
Dawnna: Tahsa leh hagau a shina ahi.



Pic: Hagau Siangthou in Pasion tate umpi

COLOUR BAWL IN



SIMMUN - 18

Dohna 1: Khelna in Pasion leh mihingte kizopna bang a law tai?

Dawnna: Akhentan hi.

Dohna 2: Mihingte khelna ngaidam thei a, Pasion leh mihingte kizopsah thei khu koi e?

Dawnna: Jesu khrist ahi.

Dohna 3: Pasion in Jesu khrist ziah a mihingte khelna bang achi ngaidam thei e?

Dawnna: Jesu khrist sisan ziah in angaidam thei hi.

Dohna 4: Jesu khrist gingtate khelna Pasion in bang alaw ei?

Dawnna: A ngaidam ta hi.

Dohna 5: Mihingten ikhelate uh ngaidam ahithe nading a ibawlthei umsun uh bang e?

Dawnna: Ki ngaingiam tah a mikhial kahi chia ngaidam ngen a Jesu Khrist ih mang leh hundampa a ipom ding uh ahi.

Dohna 6: Shinua Chiang a mihingte umnading mun bangzat a um ei?

Dawnna: Mun ni gawtmun (hell) leh vangam (heaven) aum hi.



Pic: Khiel kisia khu Mangpa Jesu'n a ngaidam hi

COLOUR BAWL IN



SIMMUN - 19

Dohna 1: Mihingte ih shinua chiang ua ih um nading mun uh heiteng ahiai?

Dawnna: Vangam leh gawtmun te ahi.

Dohna 2: Vangam leh gawtmun heiteng a nuam zaw diai?

Dawnna: Vangam anuam zawding hi.

Dohna 3: Vangam a koite um ding e?

Dawnna: Jesu khrist gingta leh a hundampa a pomte aum ding uhi.

Dohna 4: Gawtmun a koite um ding e?

Dawnna: Jesu khrist gingtalou a hundampa a pomlou te aum ding uhi.

Dohna 5: Vangam a ium thei nading ua bang e ibawl ding ua poimaw?

Dawnna: Jesu gingta a eima mang leh hundampa a ipom uleh vangam ah ih um thei ding uhi.

Dohna 6: Jesu mang leh hundampa a pom kichi khu a umzia bang e?

Dawnna: Eima mimal deidan hilou a Jesu Khrist deidan a hin khua mang khu ahi.



Pic: Vangam (heaven) leh meidil (hell)

COLOUR BAWL IN



SIMMUN - 20

Dohna 1: Pasion hinate bang bang e?

- Dawnna:**
- i. Pasion silbangkim bawlthei
(God Omnipotence)
 - ii. Pasion silbangkim thei
(God Omniscience)
 - iii. Pasion mun zousia a um
(God Omnipresent)

Dohna 2: Hattuum in thugousia bangzat inei e?

Dawnna: Ni inei hi. Baptisma leh Mangpa Annsiang ahi.

Dohna 3: Pasion thaunil (ordain) te bang nasem ding ahi uoi?

Dawnna: Pasion leh Mihingte kikal a palaina sem a siampi ding a guat ahi uhi.



Pic: Mangpa Annsiang

COLOUR BAWL IN |



SIMMUN - 21

**KHRISTIAN THUGINPI
(APOSTLES' CREED)**

PASIAN HINA

Bangkim bawlthei, Pa Pasian,
Lei leh Van siampa khu kagingta hi.

A tapa tang khat Jesu Khrist ka Mangpa kagingta hi.

JESU KHRIST HINA

Ama khu Hagau Siangthou gaisah in,
nungah siangthou Mari in ahing a,

Potia Pilate thu in a thua a,
kilbeh in a um a, ashi a,
vui in a um a mishi khua ah avapei a,
nithum ni in mishi lah apat athoukia a,
van ah akatou a,

Pa Pasian bangkim bawlthei ziatlam ah atou a,

Khuna pat in mishi leh mihing te vaihawm piah ding in
ahing peikia ding hi chi kagingta hi.

HAGAU SIANGTHOU HINA

Hagau Siangthou ka gingta hi,

HATTUAM HINA

Huapzou hattuum siangthou khu kagingta hi.

Misiangthou kipawl khawmna khu kagingta hi

Khiel ngaidamna ka gingta hi.

Tahsa thawkiana ka gingta hi.

Kumtawn hinna ka gingta hi,

AMEN

SIMMUN - 22

I HATTUAM THUGINPI

1. LAISIANGTHOU
 - i. Laisiangthou pumpi (Siamchilbu apat Kihilna) bu 66 tekhu Pasion huha khum ahi.
 - ii. Adihlou umlou, Pasion in tanglai a misiangthoute zang a ana gelsah ahi.
 - iii. Ginna leh nasepna ding a kibulphuna ahi.
 - iv. Doh ding thutawp leh zui ding umsun lamkai lianpen leh tungnung pen ahi chi kapom hi.
2. PASIAN IN MITHUMTE (TRI NITY)

Pa Pasion, Tapa Pasion leh Hagau Siangthou Pasion pumkhat (Pasion khat) ahia, akikhen theilou tangtawn a um khawm zing ahi chi kapom hi.
3. PA PASIAN:

Sil Zousia siampa leh keemchingpa ahia, itna Pasion ahi chi kapom hi.
4. TAPA PASIAN:
 - i. Jesu Khrist Pasion tapa, Hagau Siangthou silbawltheina a nungah siangthou Mari sung a naungeh a hing piang ahi.
 - ii. Ama khelna neilou ahia, mi khelna hundam ding in kross tung ah khaikang in a um hi.
 - iii. Haankhuuh sung ah vui in a um a, ni thumni'n Pasion silbawltheina toh mishi lah apat loupitah in tahsa a kaithaw in a um a, van tung ah akatou hi.
 - iv. Pasion ziatlam a tou in, agingtate gensahpa ahi a, mihing leh mishite thukhen ding in
 - v. Muthei in silbawltheina thupitah toh ahing peikia ding hi chi kapom hi.
5. HAGAU SIANGTHOU PASIAN:
 - i. Pa leh Tapa toh kikim Pasion thu zang a mite khelna kiphawhsah leh piangthana bulpi ahi.
 - ii. Hamuanpa a gingtate susiangthou a, asung a teeng leh lamkai lianpen ahi chi kapom hi.
6. MIHING:
 - i. Mihing pen achil apat Pasion batpi a siam ahia, khelna a apua tah ziah un tahsa shina leh hagau a Pasion toh kikhenna leitung a mizousia tung ah atu hi.
 - ii. Khelna ziah in mi zousia in Hundampa leh tanpa aki tuulmaw ta hi chi ka gingta hi.
7. HUNDAMNA:
 - i. Khelna ziah in mi zousia Pasion toh akikhen tah ziah in Hundamna khu Pasion toh kilemkia thei nading a lampi umsun ahi.
 - ii. Hundamna khu sep leh bawl ziah hilou a, Jesu khrist in kross a tatna sisan khu gintat a pomna leh Pasion hepina zal a hundamna ahizaw chi kapom hi.
8. THAWKIANA:
 - i. Mi zousia khatvei shi ding ahimabang in mishi zousia a thoukia ding uhi.
 - ii. Hundam sate khu tangtawn nopna tang ding in shi thei lou tahsa toh a thoukia ding uhi.
 - iii. Hundam loute khu tangtawn gimthuahna tang ding in a shi theilou tahsa toh a thoukia ding uhi chi kapom hi.
9. HATTUAM:
 - i. Hattuam thugousia ni akinei a, Baptismal leh Mangpa Annsiang ahi.

Baptisma: Gingtute zousia in techi hun a chetna ding a tan tei tei ding ahi.

Mangpa Annsiang: Tam khu Baptisma tang zousia in anethei ding a, Mangpa thuah na theizing nading a Hattuam ten a bawl leng ding ahi chi kapom hi.

